

- Effective interactive sales tool.
- Dynamic audio visual communication.
- Repurposes investments for staff training.
- Environment friendly. Avoids Printing.
- Centralize communication management.
- In use by leading Banks.



Streme empowers communication directly with your retail customers at branches across the nation. Driving key messages across with centralized control, Streme offers unlimited options to build solutions to enhance the customer experience and drive sales.

**Enhancing the customer experience**

With Streme, you can build and deliver world class retail experience to your banking customers. Today, interactivity and driving the key message being the need of the hour, Streme provides you the platform to deliver the same.

**Interactive Audio Visual Sales Tool**

Instead of just simple broadcast signages that are in a looping mode, you can integrate devices like simple TV remote controls to build interactivity. With interactivity, you take the customer recall and engagement to the next level. On large screens as opposed to smaller kiosk screens, you deliver audio visual messages powerfully to build the customer experience.

**Audio Visual Training facility**

Maximizing return on investments is the underlying thought behind any Streme project. Before and after business hours, the same network investments are repurposed for training the branch staff. With messages from senior management now reaching them in audio visual form, access to a AV training library with just a remote control, group training and employee communication was never so easy.



**Environment Friendly**

Streme supports the Go green revolution. With digital displays, you avoid unnecessary papers, printing and transportation, resulting in saving trees and reducing pollution. Streme supports embedded technology for lower power consumption, thereby supporting the environment further.

**Meets regulatory display requirements easily**

Replacing most notice boards, you can now easily display all statutory notices, interest rates etc exactly for the time period specified. No more outdated notices on the boards. No more missing information.

**End to end solutions.**

We work very closely with most national and regional system integrators. Our solutions approach guarantees a working design of the entire solution. We are open to working with your existing SI partners. Taking end to end responsibility of delivery, you can now rest assured of a perfectly rolled out project. We even provide services like creative adaptation and network management to our customers.

**Proven Framework**

Streme works on a 150 component framework. Streme powers thousands of screens across the nation including leading banks. With focus on embedded systems, we bring unmatched reliability, security and scalability to the network. You can setup a centrally controlled, future proof, expandable, secure network.

The Streme framework consists of player hardware, embedded OS and Streme's embedded player software. Streme player software is benchmarked and proven with leading hardware providers like Intel®, featuring the latest Intel® technology based motherboards running on Intel® Core™2 Duo processor and Intel® Celeron® M Processor, to deliver truly outstanding dual-core performance computing power, great battery life as well as, low power, with multiple OS support and longer life cycle commitment.

# Banking Solutions

Transforming Customer Experience.



## Retail Branch

### Broadcasting key messages

Corporate marketing decides when and what communication to display at each branch separately. With regional language integration, your message reaches the customer faster and better.

### Interactive Sales tool

Integrating with a remote control device, the branch screen transforms into an interactive sales tool. An effective tool for sales associates, it is very engaging to demonstrate new products to the customers. At the central office, you can even correlate branch sales with offers selected for display, measuring effectiveness of the display in driving sales.

### Sense customer identity on the fly

You can now sense who has walked in the branch by sensing a RFID tag on smart cards or swipe cards of the customer. Instant welcome messages, directions for key customers, key offers of interest etc. personalize the messages and create a wow effect.

### Senior Management Speech

You can now broadcast a speech by senior management live or in a recorded form for display at all the branches. This takes the message right to all employees across the nation instantly.

### Interactive Training tool

After and Before business hours, the system doubles as an audio visual training system. Employee groups can watch the displays and select content for training. A log is maintained for all modules selected at the training coordinator's office centrally. You can then administer a standard test on a third party learning management system to gauge effectiveness of the training program.

### Integration with Token Management Kiosks

Integration with an existing token management system is easy. Now customers have to look at only one single display for token information and marketing communications. As customers look for their token numbers coming up, communication reaches them instantly.

### Forex Boards

You can integrate foreign exchange information on the screens for multiple currencies. With interface to the central back end system, we can integrate forex information seamlessly for display as it gets updated on your servers.

### Notice boards

You can now have a single screen showing regulatory notices, interest rates etc. instead of pasting printouts. You can now guarantee display of notices only in the relevant period. No more outdated notices on the boards.

### ATM locations

Making the best use of the waiting queues outside the ATM machines, you can now broadcast new products and offerings that one can check out once inside the ATM area. With screens facing outside and addressing the queue area, broadcasting key messages also makes communication visible to passers by.

## Head office, Regional office & Back office

### Reception

You can now impress your corporate visitors with large displays powered by LCD projectors. Visitors can now view key events happening, corporate videos etc on the screens.

### Meeting room displays

With Meeting Magic, you can manage meetings, display bookings, notify participants and integrate with your existing email system. Each meeting room has a small 9 inch display to show bookings and status.

### Cafeterias

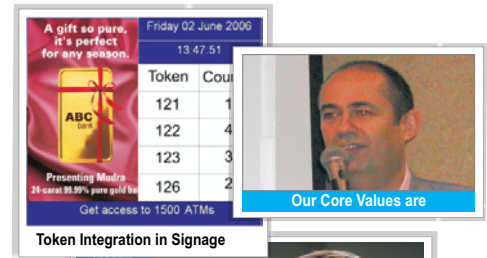
In cafeterias, though the focus is on light content and entertainment, it is an ideal location to drive across key corporate messages. In a lighter and a more receptive mood, employees catch the right message instantly.

### NOC Centre

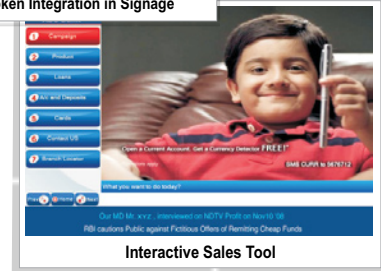
Streme now powers monitoring centers on single screens or multiple video cubes, LCDS, projectors etc. Powerfully integrating desktop streaming, applications, external video and news sources, the NOC solution brings forward a 24X7 application for central and business group monitoring.

### Monitoring, Motivation and Security

Integrating powerful corporate communications, spread sheets, CCTV footage, Live TV, financial news, this solution serves the precise communication needs of employees in their work areas. A special panic mode reserved for emergency situations displays evacuation directions instantly, enhancing employee safety.



Token Integration in Signage



Interactive Sales Tool

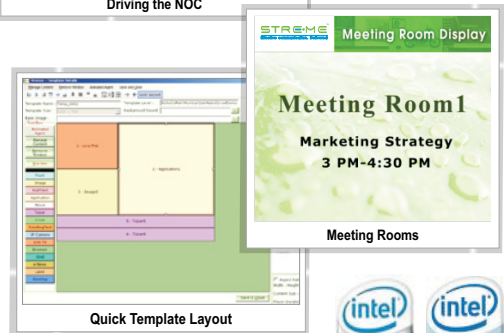


Monitor, Motivate and feel Secure



Driving the NOC

Corporate Lobby



Quick Template Layout



Intel, Intel Inside, the Intel Inside logo, Intel Centrino, and the Intel Centrino logo and Celeron are trademarks or registered trademarks of Intel Corporation or its subsidiaries in the United States and other countries. Microsoft XP Embedded / CE are registered trademarks or trademarks of Microsoft Corporation in the United States and/or other countries. All other trademarks and registered trademarks are the property of their respective owners.

Streme solutions are used at retail branches, head office and back offices across marketing, operations and HR functions. Streme currently powers displays at leading banks across locations for most solutions.

To know more visit: [www.streme.tv](http://www.streme.tv)

Call us on: **+91-9821125713**  
**+91-9820330268**