

Solutions that work for your business

Maximise investments

Centralised Management

Over 150 solutions for 20 business verticals

More than 3000 deployed internationally.



Driving key messages across with centralized control, Streme offers unlimited options to build solutions to enhance the experience with effective communication & interaction.

Enhancing the customer experience

With Streme, you can build and deliver world class experience to your customers. Today, interactivity and driving the key message being the need of the hour, Streme provides you the platform to deliver the same.

Interactive Audio Visual Tools

Instead of just simple broadcast signages that are in a looping mode, you can integrate devices like simple TV remote controls to build interactivity. With interactivity, you take the customer recall and engagement to the next level. On large screens as opposed to smaller kiosk screens, you deliver audio visual messages powerfully to build the customer experience.

Environment Friendly

Streme supports the Go green revolution. With digital displays, you avoid unnecessary papers, printing and transportation, resulting in saving trees and reducing pollution. Streme supports embedded technology for lower power consumption, thereby supporting the environment further.

End to end solutions.

We work very closely with most national and regional system integrators. Our solutions approach guarantees a working design of the entire solution. We are open to working with your existing SI partners. Taking end to end responsibility of delivery, you can now rest assured of a perfectly rolled out project. We even provide services like creative adaptation and network management to our customers.

Proven Framework

Streme works on a 150 component framework. Streme powers thousands of screens across the nation including leading banks. With focus on embedded systems, we bring unmatched reliability, security and scalability to the network. You can setup a centrally controlled, future proof, expandable, secure network.

The Streme framework consists of player hardware, embedded OS and Streme's embedded player software. Streme player software is benchmarked and proven with leading hardware providers, featuring the latest technology to deliver truly outstanding dual-core performance computing power, great battery life as well as, low power, with multiple OS support and longer life cycle commitment.

Retail Solutions

Transforming Customer Experience.

Streme for Special Information Displays

You can also drive displays of unusual shapes and sizes. Powered by projectors and special films, careful mounting and precision engineering Streme Digital Signage creates a wow effect for the customers

Streme for Visual Merchandizing

Large transparent films stuck over glass provide a great opportunity to showcase visual merchandize without obstructing the view of the store. Focus your sight on the glass and you see the video powered by Streme Digital Signage. Focus inside the store and you see the merchandize. Amazing!

X Magix for feature display

Lift the object and see the features on the screen. Ideal for high tech products like cell phones, small appliances etc, powered with Sensors, x magix drives the customer experience to a whole new level.

Streme Displays at floor level!

Unusual placement of displays always attracts attention. Imagine an LCD at the floor level! Mounted with toughened glass in a mat at floor level, driven by Streme Digital Signage you can position this near accessories counter to drive sales to a whole new level.

Streme with Real time Price Interface

Rates in retail change in real time. Items could be announced at a discount for limited time or till stocks last. Streme Digital Signage integrates with your retail POS or ERP system to get deals and display them in real time across stores, pushing up your sales topline.

Streme for priority customers

As soon as a priority customer walks in with an RFID card, Streme Digital Signage senses the identity of the customer and flashes a welcome message on the screen. What better way to surprise the customer and make him/her feel as a special guest in the premises!

Streme for In-shelf signage

Small displays positioned strategically in shelves, powered by wi-fi enabled tablets, attract attention of shoppers at the point of sale. With information limited to the items on sale in the vicinity, in shelf signages provide focused, product specific information. Managed centrally using Streme digital signage, this is a powerful promotion tool.

Streme for Digital menu boards

Displaying different menus at different times of the day, Streme Digital Signage plays animated videos to drive sales. Hot coffee pouring, pop corn being made, steaming rolls coming out of the oven simulate the urge to purchase right now!

Streme for in store Audio Streaming

Stream audio directly from the head office to stores to build ambience. Broadcast jingles to stores and point cast audio messages. Instead of connecting a screen to the player, connect a speaker system! Streme Digital Signage does it all



Special Information Displays



Streme for Visual Merchandizing



X Magix for feature display



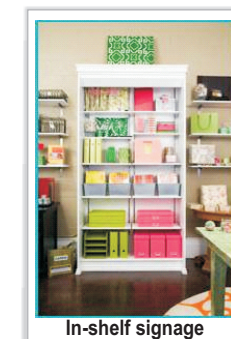
Displays at floor level



Real time Price Interface



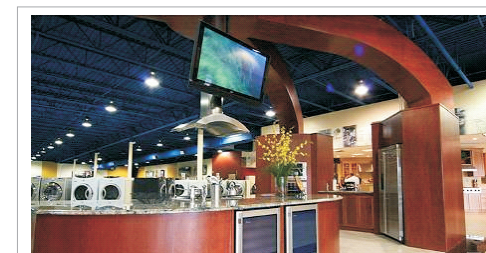
Priority customers



In-shelf signage



Digital menu boards



in store Audio Streaming

Retail Solutions

Transforming Customer Experience.

Streme with QR Code integration

Just point the cell phone app at the QR code on the Streme Digital Signage and explore the features on-line. Customers can now explore features of only those products they are interested in. As the customer carries the cell phone always, the message and product information is now available in social media.

Streme Interactive Sales Tool

Interacting with a large screen from a distance poses a unique challenge. Too close and its difficult to see. Too far and you cant touch the screen. Streme Digital Signage solves this dilemma with a remote control to select options on the screen. Now interact, choose options and convert your passive signage into an active sales tool!

Streme for Information Billboards

Streme Digital Signage Empower customers to choose screen options using their cell phones. SMS or Bluetooth or a native app for the cell phone drives the interaction. A bill board with messages uploaded by customers enhances participation.

Streme for SMS Quiz

Imagine an interactive question that pops up during a Streme digital signage display. Customers are prompted to send a response. Some do. And slowly over a period of time, you have a repository of customer responses and solid data. This can be used effectively for future marketing campaigns. Streme Digital Signage enables this and lot more!

Streme Product Demonstration Station

Swipe the bar code of the product on this station to instantly see a video powered by Streme Digital Signage demonstrating the product. This audio visual tool is an excellent aid to educate the customer and drive sales. Managed centrally, you can ensure a uniform experience across stores.

Streme with Que Management

Replacing tradition LED Token boards, Streme Digital Signage can integrate with a compatible token management system. Now be assured of the attention of an alert audience. An excellent opportunity to communicate your key messages to your customers.

Streme Interactive Training Tool

Instead of just broadcasting training programs after or before office hours, let your staff select the training they want to view! Streme digital signage interfaced with a remote control or a touch screen, converts your signage into a powerful audio visual training tool. You can now reuse your investments for internal training and marketing communication.

Streme for Emergency Messaging

With its emergency template activation, Streme Digital Signage can switch into an emergency broadcast system instantly. A number of predefined templates instructing the viewers can be predefined for quick activation.



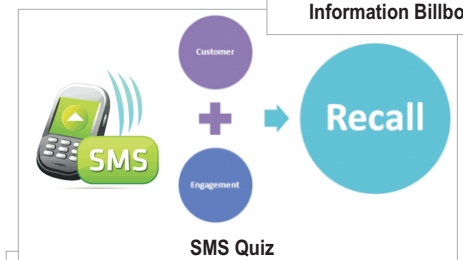
QR Code integration



Interactive Sales Tool



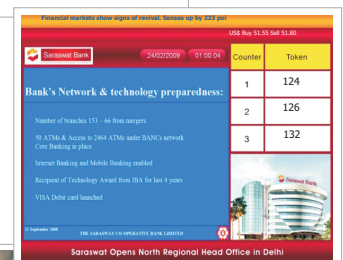
Information Billboards



SMS Quiz



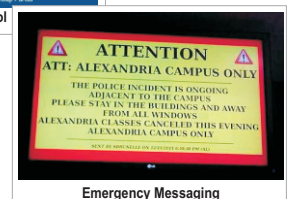
Product Demonstration Station



Que Management



Interactive Training Tool



Emergency Messaging

To know more visit: www.streme.tv

Call us on: **+91-9930264735**
+91-9167397102